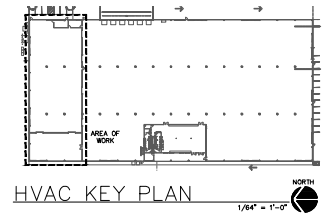
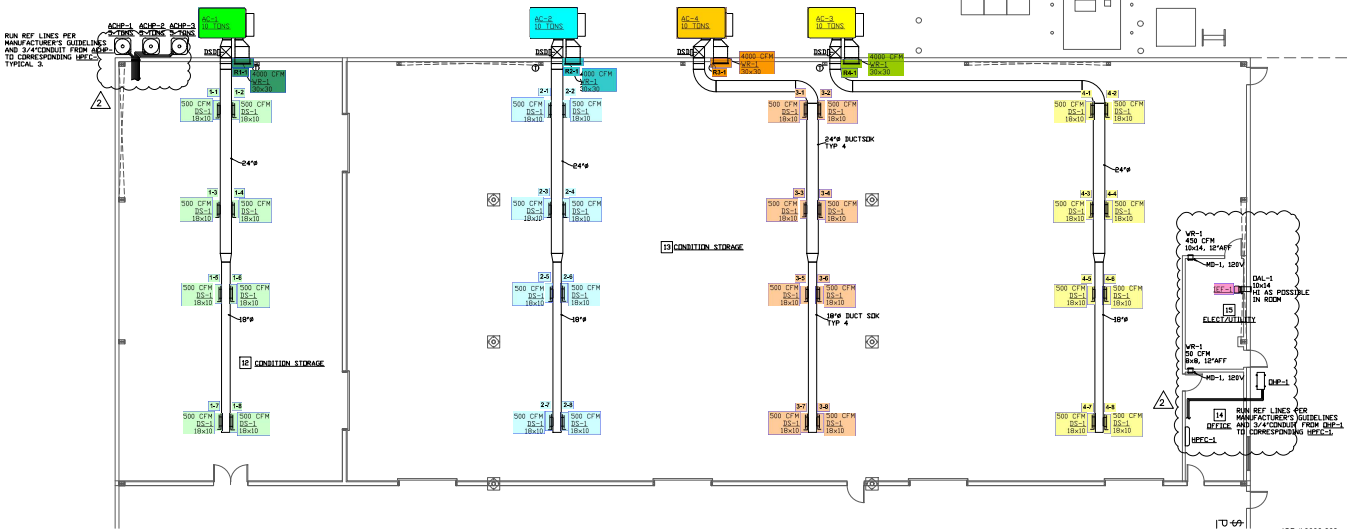


OUTSIDE AIR	MIN	MAX
AC-1	450	ECON
AC-2	600	ECON
AC-3	600	ECON
AC-4	600	ECON
F-1,2,3 TOTAL	1800	4800



DUCTWORK EXTERIOR TO BUILDING TO BE DOUBLE WALLED 5/8\"/>

RUN REF. LINES PER MANUFACTURER'S GUIDELINES AND 3/4\"/>



HVAC ENLARGED FLOOR PLAN

1/8" = 1'-0"

JOB # 2022-223
 GDMO ENGINEERING, INC.
 Mechanical and Safety Engineers
 212 W Pine St. Ste 4
 Los Angeles, CA 90012
 Ph: 213-267-0899
 Fax: 213-267-7498
 E-mail: gdmengrnc@ecgbbal.net

REVISION	DATE	BY
PLAN CHECK	12/15/22	MS
PLAN CHECK	8/9/23	MS

MIKE SMITH ENGINEERING, INC.
 4 ROBERT MANN STREET
 CARLSBAD, CALIFORNIA 92008
 PHONE (760) 834-8300

TITLE: HVAC ENLARGED FLOOR PLAN

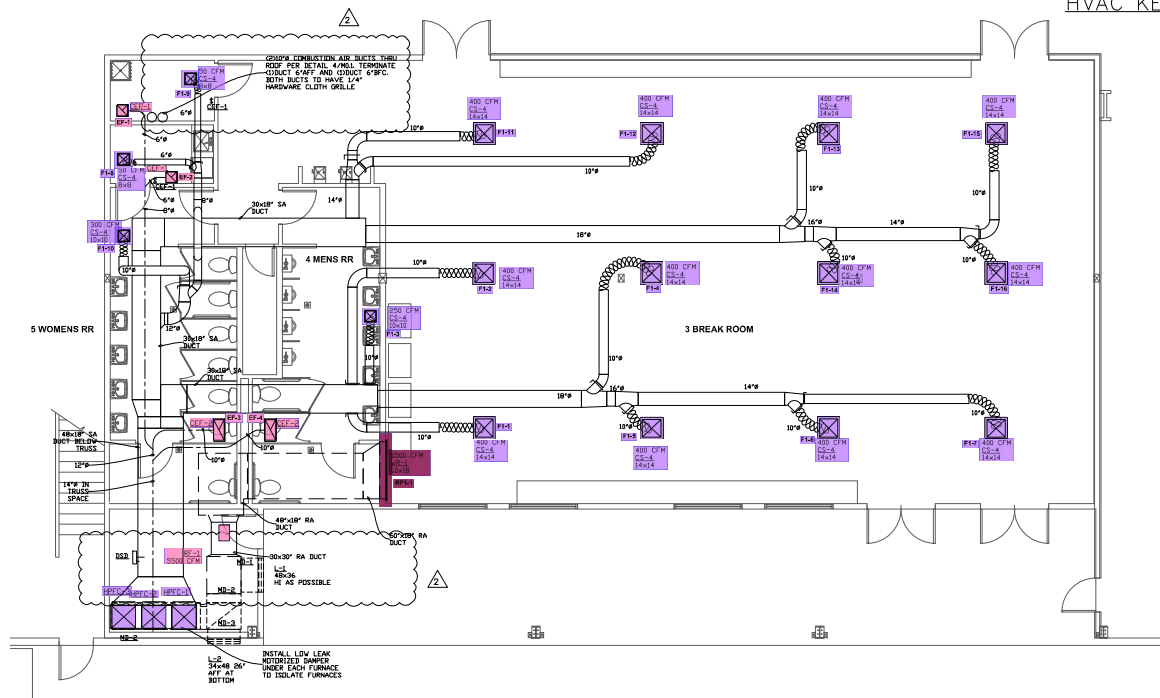
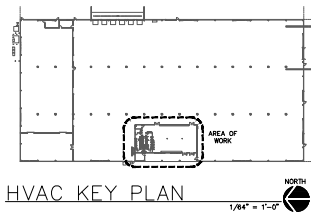
PROJECT: AS PROCESSING & STORAGE FACILITY FOR RIVERWALD TRAINING COMPANY
 PROJECT LOCATION: 6337 EAST PINE ST. LOS ANGELES, CA 90004

THESE PLANS ARE PREPARED BY AN ENGINEER OR ARCHITECT UNLESS THERE IS A REFERENCE TO ANOTHER PROFESSIONAL SEAL.

DATE	BY
8/27/2023	MS
AS NOTED	MS
2/2/2023	MS
8/2/2023	MS

M1.1

OUTSIDE AIR SCHEDULE		
OUTSIDE AIR	MIN	MAX
AC-1	1000	EQDN
AC-2	600	EQDN
AC-3	600	EQDN
AC-4	1000	EQDN
F-L.S.3 TOTAL	1600	4800



FLOOR PLAN



JOB # 2022-223
 GDMO ENGINEERING, INC.
 Mechanical and Safety Engineers
 212 W Pine St. Ste 4
 Los, Ca 95242
 Ph: 209-267-0899
 Fax: 209-267-74986
 E-mail: gdmstenginc@sbcbal.net

NO	REVISION	DATE
1	PLAN CHECK	12/21/22
2	PLAN CHECK	8/9/23

MIKE SMITH ENGINEERING, INC.
 4 ROBERT MANN STREET
 CALIFORNIA, CA 95008
 PHONE: (209) 334-2320

TITLE:
 HVAC ENLARGED FLOOR PLAN
 BREAK AND RESTROOMS

PROJECT:
 AG PROCESSING & STORAGE FACILITY EXP.
 RIVERMOUNT TRAINING COMPANY
 PROJECT
 6337 EAST PINE ST.
 LOS, CA 95040



NO	REVISION	DATE
1	ISSUED	8/23/2023
2	AS NOTED	8/23/2023

M1.2

THESE PLANS ARE PREPARED BY AN ARCHITECT OR ENGINEER REGISTERED IN THE STATE OF CALIFORNIA.